

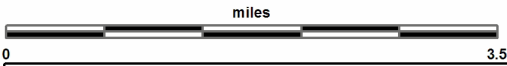
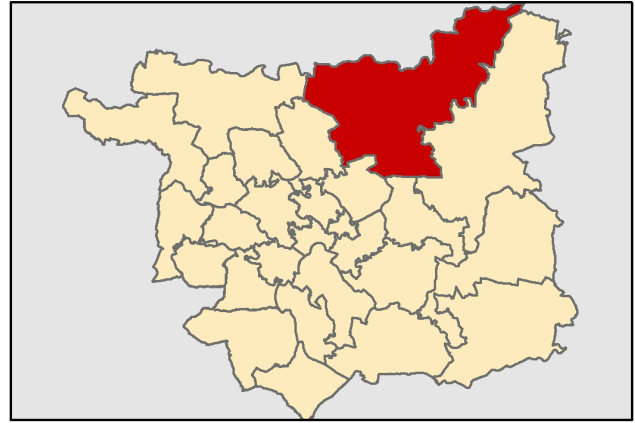
# EPOS - Villages West and Wetherby

This report was produced by the Children's Performance Service on 01/06/2012. The information in these overviews are based on the cluster data profile version 5.12.

For more information telephone 0113 39 50701 or email [educ.pmi@leeds.gov.uk](mailto:educ.pmi@leeds.gov.uk) or visit:

[www.leedsinitiative.org/ClusterDataProfile.aspx](http://www.leedsinitiative.org/ClusterDataProfile.aspx)

The map to the right gives the position of the cluster in Leeds. The map below shows the location of the Children's Centres, Primary and Secondary Schools in the cluster.



## Map Key: EPOS - Villages West and Wetherby

### 1 - Children's Centre/s

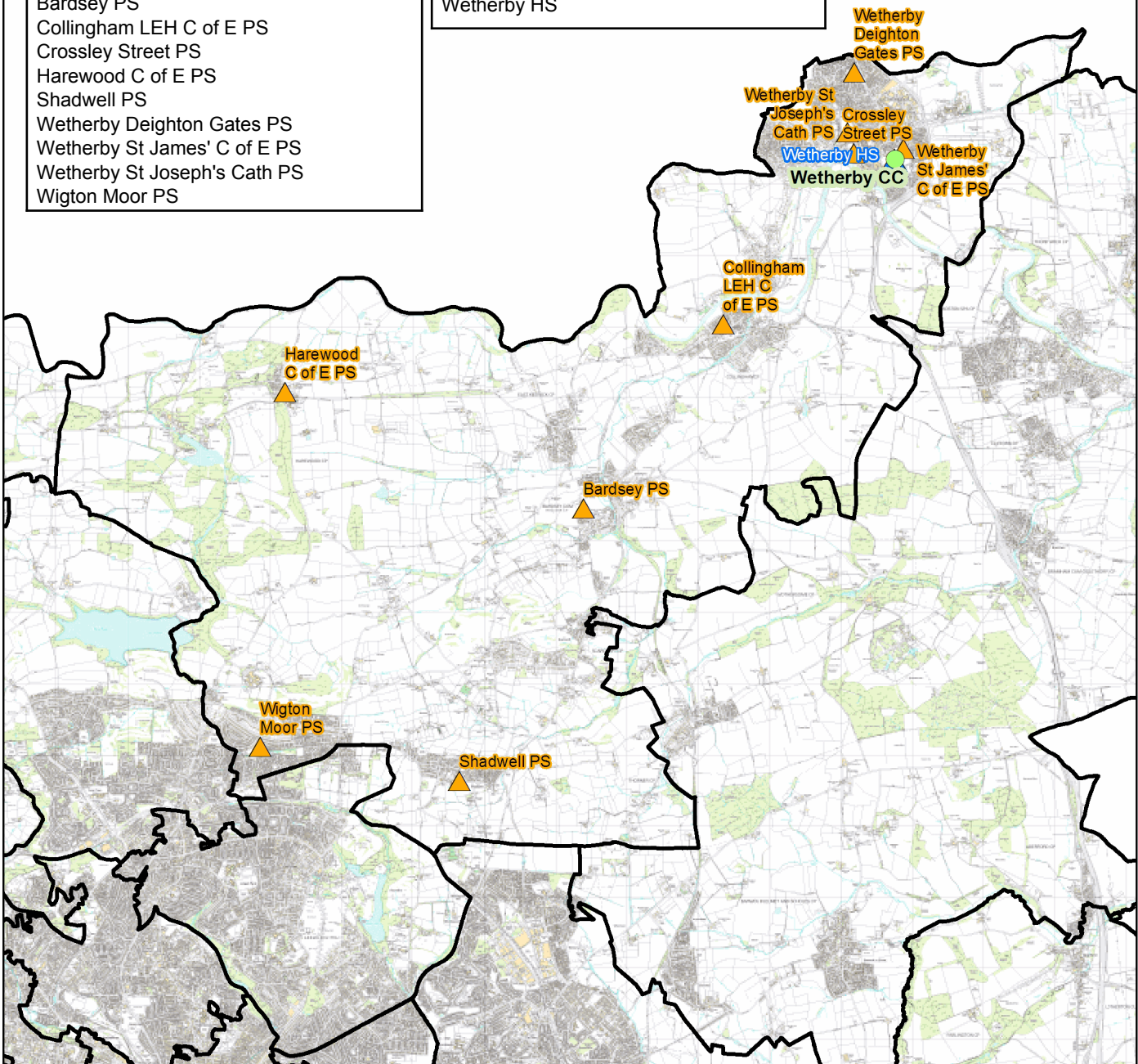
Wetherby

### 9 - Primary School/s

Bardsey PS  
Collingham LEH C of E PS  
Crossley Street PS  
Harewood C of E PS  
Shadwell PS  
Wetherby Deighton Gates PS  
Wetherby St James' C of E PS  
Wetherby St Joseph's Cath PS  
Wigton Moor PS

### 1 - Secondary School/s

Wetherby HS



**Cluster Overviews key****Data Period:**

The codes in the key to the right are for the time periods that the data in these reports cover. They will appear next to all data sets.

Academic Year

DP:A

Calendar Year

DP:C

Financial Year

DP:F

Snapshot

DP:S

Other

DP:O

**Cluster Overview**

Data Source: January School Census					DP: S
Primary Schools	DFE	Total Number on roll			
		2010	2011	2012	
Bardsey Primary School	2385	183	174	166	
Collingham Lady Elizabeth	3357	204	209	210	
Hastings C of E Primary					
Crossley Street Primary School	2347	232	238	223	
Harewood C of E Primary School	3037	103	105	100	
Shadwell Primary School	2441	195	200	200	
St Joseph's Catholic PS Wetherby	3366	226	229	234	
Wetherby Deighton Gates Primary School	2400	286	254	230	
Wetherby St.James' C of E Primary School	3045	83	77	81	
Wigton Moor Primary School	2390	406	415	406	
<b>Total</b>		<b>1918</b>	<b>1901</b>	<b>1850</b>	

Data Source: January School Census					DP: S
Secondary Schools	DFE	Total Number on roll			
		2010	2011	2012	
Wetherby High School	4111	966	960	886	
<b>Total</b>		<b>966</b>	<b>960</b>	<b>886</b>	

Data Source: Children's Services	
Children's Centre	Ofsted ID
Wetherby	

Data Source: Children's Services - Feb 2012		DP: S
Children's Centre reach area registration for families of children aged 0-5		% Registered
Cluster		35.73
Wedge		59.28
Leeds all		60.23

Data Source: The office of National Statistics population mid-year estimates										DP: S
Population Estimates	0-15			Working Age			60/65+			
	2008	2009	2010	2008	2009	2010	2008	2009	2010	
Cluster	4394	4344	4295	15686	15640	15672	6777	6942	7122	
Wedge	40736	40931	41233	132341	133770	135300	37146	37313	37640	
Leeds all	132741	133396	134493	516578	522769	531036	129937	131536	133240	

Data Source: NHS Leeds													DP: S
Under Fives	September 2010						September 2011						
	0-1	1-2	2-3	3-4	4-5	Total	0-1	1-2	2-3	3-4	4-5	Total	
Cluster	229	249	227	237	273	1215	228	241	260	230	250	1209	
Wedge	3177	3061	3042	2929	2892	15101	3041	3163	3021	2987	2942	15154	
Leeds all	10202	9848	9478	9195	9113	47836	9996	10173	9787	9438	9319	48713	

Data Source: January School Census												DP: S
Percentage of pupils who are:	Black and Minority Ethnic			English as an Additional Language			Free School Meal Eligible			Special Education Needs		
	2010	2011	2012	2010	2011	2012	2010	2011	2012	2010	2011	2012
<b>Primary</b>												
Cluster school	14.5	16.5	18.2	7.5	8.4	9.0	4.8	5.4	4.6	12.8	15.9	13.5
Cluster residence	9.9	11.6	12.6	5.5	6.7	7.1	4.5	5.3	4.3	13.7	15.6	13.5
Wedge school	41.6	42.9	44.0	27.2	28.2	28.9	25.0	25.2	24.7	19.5	19.9	18.5
Total primary	23.6	24.8	26.4	15.8	16.5	17.1	21.5	22.2	22.0	17.8	17.8	17.4
<b>Secondary</b>												
Cluster school	16.1	17.8	18.6	6.3	6.8	7.1	9.2	9.1	8.6	12.5	15.6	17.2
Cluster residence	8.7	9.5	10.0	3.4	3.1	3.3	5.0	4.7	3.4	14.8	16.4	18.1
Wedge school	37.5	39.2	41.1	19.5	17.3	19.8	23.2	23.9	24.2	23.9	25.6	22.1
Total secondary	18.6	19.4	20.4	10.4	10.0	11.1	19.0	19.4	19.5	21.4	20.4	19.0
<b>Leeds all</b>	<b>21.4</b>	<b>22.5</b>	<b>23.9</b>	<b>13.4</b>	<b>13.7</b>	<b>14.6</b>	<b>20.6</b>	<b>21.1</b>	<b>21.1</b>	<b>20.0</b>	<b>19.6</b>	<b>18.7</b>

Data Source: HM Revenue and Customs - taken on 31st August 2007-2009										DP: S
Child Poverty	Number of children (under 16) in families in receipt of CTC or IS/JSA			Number of children (all ages) in families in receipt of CTC or IS/JSA			Number of children in poverty, by age of youngest child, 2009			
	2007	2008	2009	2007	2008	2009	0-4	5-10	11-15	16-19
Cluster	205	205	240	230	230	270	115	105	40	10
Wedge	11340	10850	10970	12700	12220	12500	6540	3560	1850	550
Leeds all	30235	29700	31030	33690	33300	34965	18720	9640	5115	1490

Data Source: Children's Services - Summer Term 2011					DP: S	
Nursery Education Grant Claims	Number of eligible children	Number of:			Resident Claims	Non Resident Claims
		Claims by childcare setting				
Cluster		373		485	274	211
Leeds all		14500		13851	9704	4148

Data Source: January School Census and 2010 Index of Multiple Deprivation										DP: S
IMD % of pupils resident in most deprived areas	3% most deprived			10% most deprived			20% most deprived			
	10	11	12	10	11	12	10	11	12	
<b>Primary</b>										
Cluster school	0.3	0.3	0.4	1.4	1.6	2.0	2.4	2.7	3.2	
Cluster residence	0.0	0.0	0.0	0.0	0.0	0.0	0.0	0.0	0.0	
Wedge school	16.7	15.3	15.5	44.8	43.2	43.4	53.3	53.2	53.8	
Total primary	8.2	8.4	8.3	28.1	27.1	27.3	36.6	37.6	38.0	
<b>Secondary</b>										
Cluster school	3.4	3.6	3.5	10.2	11.6	10.9	13.9	15.1	14.2	
Cluster residence	0.0	0.0	0.0	0.0	0.0	0.0	0.0	0.0	0.0	
Wedge school	14.2	13.8	14.4	39.1	38.8	39.4	49.4	49.9	50.4	
Total secondary	7.0	7.5	7.6	24.0	23.5	23.8	32.3	33.5	33.6	
<b>Leeds all</b>	<b>7.7</b>	<b>8.0</b>	<b>8.0</b>	<b>26.4</b>	<b>25.7</b>	<b>25.9</b>	<b>34.8</b>	<b>35.9</b>	<b>36.2</b>	

Data Source: January School Census and CACI ACORN											DP: S
KEY: Wealthier Achievers(WA), Urban Prosperity (UP), Comfortably Off (CO), Moderate Means (MM), Hard Pressed (HP)											
Percentage of pupils in each ACORN category	2011					2012					
	WA	UP	CO	MM	HP	WA	UP	CO	MM	HP	
<b>Primary</b>											
Cluster school	63.0	2.8	21.7	4.9	6.9	63.5	2.3	22.1	4.9	6.5	
Cluster residence	68.0	1.5	19.8	5.1	5.6	69.1	1.3	19.6	4.9	4.8	
Wedge school	19.9	9.4	19.5	16.8	33.6	19.4	9.2	19.7	16.7	34.1	
Total primary	15.4	5.9	27.8	15.8	34.3	15.0	6.0	27.7	15.9	34.6	
<b>Secondary</b>											
Cluster school	45.6	2.2	23.3	11.6	17.1	45.4	2.4	23.5	10.8	17.6	
Cluster residence	62.1	1.9	21.6	5.8	8.4	62.0	1.9	22.0	5.5	8.5	
Wedge school	19.0	8.5	21.3	16.2	34.2	18.7	8.8	21.2	16.0	34.7	
Total secondary	17.1	5.2	29.7	14.7	32.5	16.9	5.3	29.8	14.7	32.6	
<b>Leeds all</b>	<b>16.1</b>	<b>5.6</b>	<b>28.5</b>	<b>15.4</b>	<b>33.6</b>	<b>15.8</b>	<b>5.7</b>	<b>28.5</b>	<b>15.4</b>	<b>33.8</b>	

Data Source: DWP information Directorate													DP: F
KEY: Job Seekers Allowance (JSA), Incapacity Benefit (IB), Lone Parent Benefit (LPB), Total Out of Work (TOW)													
Unemployment Percentage of working age people in receipt of:	2009				2010				2011				
	JSA	IB	LPB	TOW	JSA	IB	LPB	TOW	JSA	IB	LPB	TOW	
Cluster	1.6	2.8	0.5	5.0	1.5	2.7	0.4	4.8	1.4	2.6	0.2	4.5	
Wedge	5.2	6.8	2.5	15.0	5.2	6.8	2.2	14.8	5.2	6.8	2.0	14.6	
Leeds all	4.4	5.9	1.8	12.6	4.3	5.8	1.7	12.3	4.2	5.8	1.5	12.1	

Data Source: AXCIOM Lifestyle Survey 2009-2011												DP: S																	
Property type by %										Length of residence by %																			
Owned			Rented - Council			Rented - Private			Less than 1 year			2-5 years			More than 5 years														
09	10	11	09	10	11	09	10	11	09	10	11	09	10	11	09	10	11												
Cluster	83.6	83.8	9.7	8.0	8.0	106.5	8.4	8.2	0.1	4.3	5.9	2.4	16.2	16.2	16.8	79.6	77.8	80.7											
Wedge	58.9	59.1	44.4	25.7	25.8	58.7	15.4	15.2	0.0	5.8	7.1	4.4	19.0	18.0	17.6	75.2	74.9	78.1											
Leeds all	61.5	61.6	39.0	24.0	23.9	61.2	14.5	14.6	0.0	7.9	8.1	5.1	20.3	20.0	18.5	71.9	71.9	76.4											
Income by %												<10k			10-20k			20-30k			30-40k			40-50k			50k+		
			09	10	11	09	10	11	09	10	11	09	10	11	09	10	11	09	10	11									
Cluster				9	10	7	13	14	18	15	13	11	24	15	19	16	22	20	24	27	25								
Wedge				19	20	17	21	20	25	15	13	15	15	17	17	16	15	13	15	15	13								
Leeds all				20	18	18	21	20	23	16	15	16	15	18	17	14	13	13	14	16	14								
Struggling with payments by %												Food			Bills			Mortgage											
			09	10	11	09	10	11	09	10	11	09	10	11															
Cluster				8.3	6.6	3.5	9.1	9.2	6.0	2.8	0.9	1.7																	
Wedge				15.1	11.7	6.6	17.8	15.0	9.2	2.3	2.0	1.6																	
Leeds all				15.9	10.8	6.4	16.3	13.0	8.3	2.2	2.2	1.7																	

## Being Healthy

Data Source: NHS Leeds												DP: Various - Listed with each report								
Birth Data						3 year rolling average of births below 2.5kg						Number and rate of conceptions per 1000 15-17 year olds								
DP: C						% low birth weight babies			DP: O			Number			Rate					
			2006-08	2007-09	2008-10	June to May			2008-09	2009-10	2008-09	2009-10								
Cluster				6.9	5.1	4.4	Cluster				19	13	18	12						
Wedge				8.8	8.6	8.5	Wedge				368	331	44	40						
Leeds all				7.8	7.8	7.6	Leeds all				1220	1145	45	43						
DP: C						% of women receiving a health and social care needs assessment at 12 weeks as a percentage of live births in the same year			DP: F			% Initiating breastfeeding April to March			% breastfeeding at 6 weeks April to March					
			2009	2010	2011	2009-10			2010-11	2009-10	2010-11									
Cluster				83.3	84.7	88.3	81.2	83.1	53.3	52.1										
Wedge				78.6	80.0	81.3	71.6	68.0	44.7	43.9										
Leeds all				81.6	82.9	84.0	67.6	65.1	40.4	39.3										
DP: C						Number of emergency admissions by age group 2007-11			Number of emergency admissions to hospital for injury, poisoning and certain other consequences of external causes by age group											
			0-4	5-10	11-18	0-4			5-10	11-18										
Cluster				789	286	543	78	67	185											
Wedge				9631	2721	5612	1033	791	2006											
Leeds all				29793	8247	18194	3419	2522	6711											
Immunisation Data						% of 2 year olds receiving vaccinations in quarter 3 for:						% of 5 year olds receiving vaccinations in quarter 3 for:								
DP: F			Diphtheria			MMR			Diphtheria			MMR								
			09-10	10-11	11-12	09-10	10-11	11-12	09-10	10-11	11-12	09-10	10-11	11-12						
Cluster				95	99	96	85	93	95	91	93	95	79	89	97					
Wedge				95	96	96	87	87	93	93	92	95	89	91	94					
Leeds all				96	96	97	86	88	94	95	94	96	91	91	95					

Data Source: National Child Measurement Programme												DP: A								
Obesity						Obesity in Reception						Obesity in Year 6								
			% Obese			% Obese or overweight			% Obese			% Obese or overweight								
			08-09	09-10	10-11	08-09	09-10	10-11	08-09	09-10	10-11	08-09	09-10	10-11						
Cluster				7.6	7.1	7.0	21.4	21.7	20.3	14.8	13.9	12.6	27.9	30.3	27.1					
Wedge				9.7	10.4	10.1	21.4	23.3	23.2	20.3	22.1	20.5	33.9	36.6	35.2					
Leeds all				9.4	10.2	9.7	21.7	23.7	23.4	20.3	20.7	20.0	34.3	35.1	34.3					
Obesity						Obesity in Reception						Obesity in Year 6								
			3 year average 2008-2011			% Obese or overweight			% Obese			% Obese or overweight								
Cluster				7.23	21.12			13.84			28.34									
Wedge				10.07	22.68			20.89			35.18									
Leeds all				9.77	22.96			20.32			34.56									

## Stay Safe

Data Source: Children's Services					DP: Various - Listed with each report							
Number of LAC and Child protection plans	The number of children and young people looked after by the Local Authority - March based on home address before coming into care				The number of children with child protection plans - March				DP: S			
	2011		2012		2012		2012					
	Cluster	SUPP	SUPP	11	SUPP	6						
Wedge	0	474	315	0	246							
Leeds all	1439	1454	1454	947	1019							
Number of Common Assessments (CAFs)					Social Care			Social Care Referrals		Requests for Service		
DP: C	2008	2009	2010	2011	DP:A	2009	2010	2011	DP:S	Feb 11 - Jan 12		
Cluster	SUPP	10	9	14	Cluster	90	90	109		263		
Wedge	143	307	344	268	Wedge	3823	4170	4103		8634		
Leeds all	457	849	1115	892	Leeds all	14248	13784	14000		30539		
Number of Child and Adolescent Mental Health Services referrals												
DP: S	aged 11 and under				aged 12-18				total referrals			
September-October	2009-10		2010-11		2009-10		2010-11		2009-10		2010-11	
Cluster	41		7		42		35		83		42	
Wedge	471		250		686		429		1157		679	
Leeds all	1767		1124		2976		1730		4743		2854	

## Make a positive Contribution

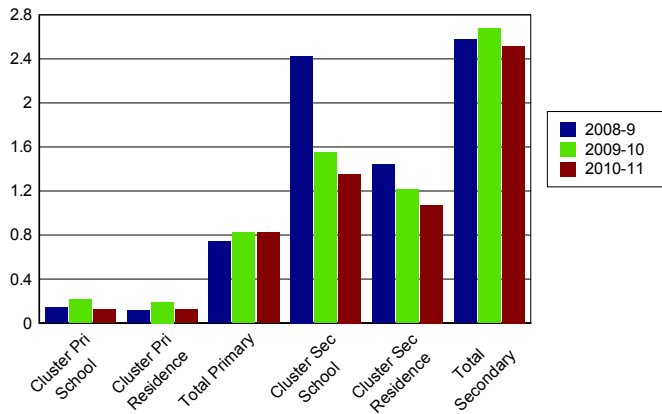
Data Source: West Yorkshire Police										DP: C
Property Crime Number of recorded crimes for:	Burglary dwelling		Burglary elsewhere		Criminal damage		Robbery		Vehicle crime	
	10	11	10	11	10	11	10	11	10	11
Cluster	144	112	65	81	145	136	9	7	87	109
Wedge	2789	2404	1062	1234	3572	2902	370	323	2368	1919
Leeds all	9508	8487	5681	5408	13599	10426	1297	1226	9168	7971
Personal Crime Number of recorded crimes for:					Drug Offences		Theft from person		Violent crime	
					10	11	10	11	10	11
Cluster					15	22	23	18	100	108
Wedge					378	915	405	298	2375	2556
Leeds all					1248	3192	2235	3034	11233	10896
Domestic Violence Incidents	Number of incidents recorded with a domestic qualifier or disposition code on the Storm WYP incident recording system - 2011									
Cluster	147									
Wedge	4116									
Leeds all	14525									

Data Source: Youth Offending Service										DP: A
Youth Offending	Number of Offenders					Number of Offences				
	07-08	08-09	09-10	10-11	07-08	08-09	09-10	10-11		
Cluster	58	29	21	27	172	127	73	71		
Wedge	780	515	405	439	1899	1454	901	883		
Leeds all	2741	2166	1522	1511	6331	4883	3134	3150		
April 2010 - March 2011 Number of offences by young offenders										
	Burglary	Breaches	Criminal Damage	Drugs Offences	Motoring and Vehicle	Other	Public Order	Theft and handling	Violence against the person	
Cluster	6	9	9	SUPP	5	9	10	12	7	
Wedge	69	85	99	66	77	108	95	125	159	
Leeds all	291	270	328	204	218	358	282	612	587	

Data Source: School Census													DP: A
Attendance and persistent absence by percentage	Attendance			Authorised Absence			Unauthorised Absence			Persistent Absence 15%			
	08-09	09-10	10-11	08-09	09-10	10-11	08-09	09-10	10-11	08-09	09-10	10-11	
<b>Primary</b>													
Cluster school	96	96	96	4	4	4	0.1	0.2	0.1	1.5	2.9	1.8	
Cluster residence	96	96	96	4	4	4	0.1	0.2	0.1	1.3	1.8	1.1	
Total primary	94	94	95	5	5	4	0.7	0.8	0.8	5.9	5.5	4.3	
<b>Secondary</b>													
Cluster school	91	92	93	6	6	6	2.4	1.5	1.4	12.6	10.7	9.5	
Cluster residence	93	93	94	5	5	5	1.4	1.2	1.1	8.4	7.5	6.5	
Total secondary	92	92	92	6	6	5	2.6	2.7	2.5	13.0	13.1	11.2	

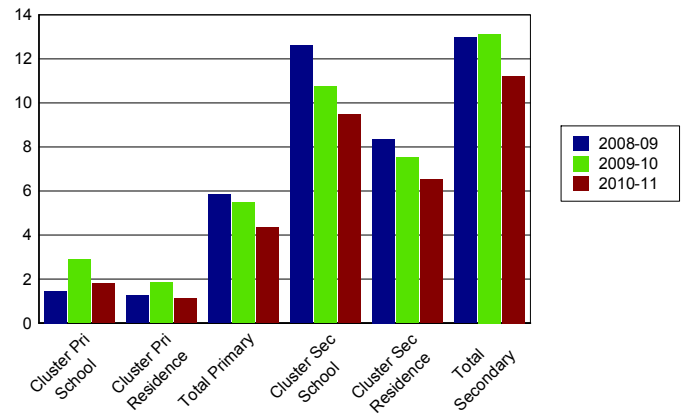
**% Unauthorised Absence**

2008-2011



**% Persistent Absence**

by 15% measure 2008-2011



Data Source: Children's Services													DP: A
Exclusions	Fixed Term Exclusions						Permanent Exclusions						
	Number			Rate per thousand			Number			Rate per thousand			
Primary	08-09	09-10	10-11	08-09	09-10	10-11	08-09	09-10	10-11	08-09	09-10	10-11	
Cluster school	7	14	15	3.7	7.3	7.9	0	0	0	0.0	0.0	0.0	
Cluster residence	3	13	4	1.7	7.1	2.2	0	0	0	0.0	0.0	0.0	
Total primary	467	371	455	7.7	6.0	7.3	2	2	2	0.0	0.0	0.0	
<b>Secondary</b>													
Cluster school	83	77	106	84.1	79.7	110.4	0	0	0	0.0	0.0	0.0	
Cluster residence	52	62	72	71.1	89.1	101.3	0	0	0	0.0	0.0	0.0	
Total secondary	4350	4286	3806	93.6	93.1	83.2	52	57	44	1.1	1.2	1.0	

## Enjoy and Achieve

Data Source: Keypas and DFE performance tables

DP: A

**Foundation Stage Profile Data** The percentage of pupils achieving a good level of development (78+ points overall and 6+ points in all PSE and CCL strands)

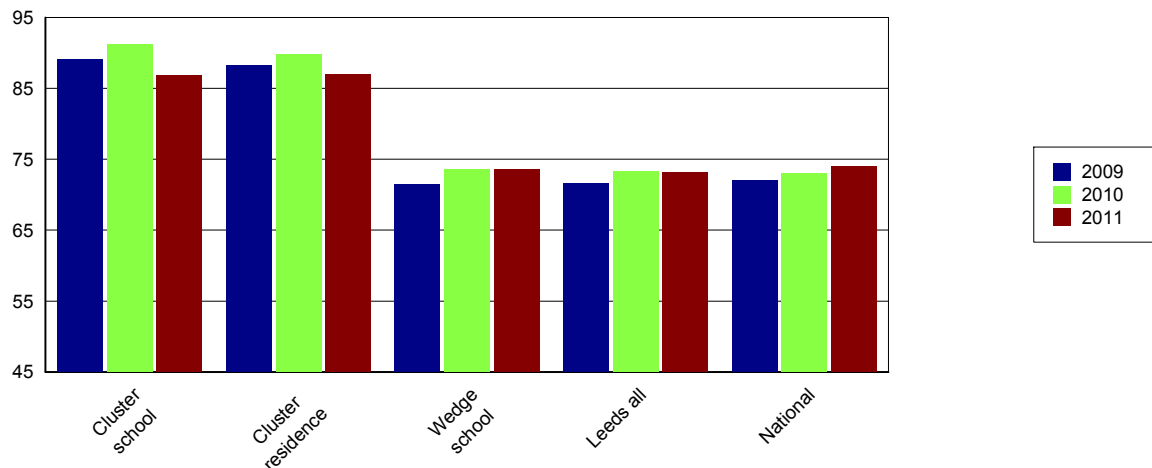
	2008	2009	2010	2011
Cluster school	70	59	75	75
Cluster residence	70	61	70	75
Leeds all	47	51	53	58

KS2 Data DP: A	English 4+			English 5+			Maths 4+			Maths 5+			English & Maths 4+		
	09	10	11	09	10	11	09	10	11	09	10	11	09	10	11
Cluster school	91	93	93	51	52	44	92	93	89	53	55	55	89	91	87
Cluster residence	90	91	92	51	48	45	92	93	90	52	52	54	88	90	87
Wedge school	78	78	80	31	31	30	78	79	78	35	32	33	71	74	74
Leeds all	79	79	81	28	31	32	77	79	78	33	31	32	72	73	73
National	80	80	82	29	33	29	79	79	80	35	34	35	72	73	74

KS2 Data - Expected progress	Made 2 levels of progress in English		Made 2 levels of progress in Maths	
	Number of pupils	Percentage	Number of pupils	Percentage
Cluster school	238	92.2	239	92.3
Wedge school	1865	90.5	1804	87.2
Leeds all	6334	88.6	6087	85.0
National		84.0		83.0

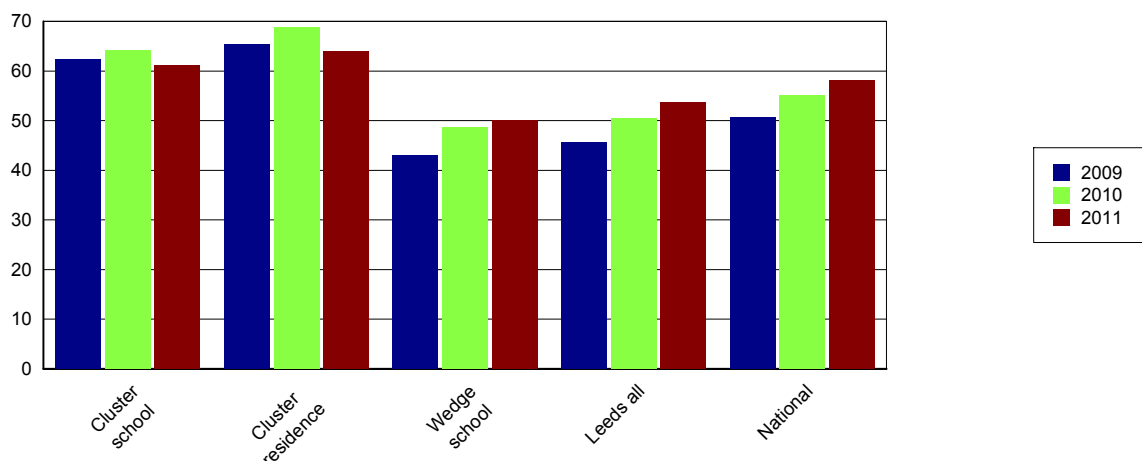
### Percentage of English and Maths

Level 4+



Data Source: EPAS and DFE performance tables												DP: A	
The results are for GCSE & equivalent qualifications. The calculation of achieving no qualifications includes all qualifications													
KS4 Data	% of 5+ A*-C			% of 5+ A*-C inc Eng & Maths			% English Baccalaureate	% of 5+ A*-G			% achieving no qualifications		
	09	10	11	09	10	11	11	09	10	11	09	10	11
Cluster school	70	78	75	62	64	61	12	97	99	99	1	1	
Cluster residence	77	87	85	65	69	64	15	96	98	98	2	1	1
Wedge school	67	78	84	43	49	50	12	92	96	96	2	1	0
Leeds all	67	76	82	46	51	54	13	91	94	94	2	2	1
National	70	76	81	51	55	58	15	94	95	95		1	1

### Percentage 5 A\*-C Including English and Maths



## Achieve Economic Well Being

Key: Not in Employment, Education or Training (NEET), In Employment, Education or Training (EET), in Full time Education (FE)													
Data Source: November destination survey													DP: S
NEET/FE		Number of NEET			% NEET			Number of FE			% FE		
		2009	2010	2011	2009	2010	2011	2009	2010	2011	2009	2010	2011
Cluster school	Year 11	6	SUPP	SUPP	3	SUPP	SUPP	165	161	133	88	93	90
	Year 12	SUPP	SUPP	SUPP	SUPP	SUPP	SUPP	101	92	90	97	98	99
	Year 13	SUPP	SUPP	SUPP	SUPP	SUPP	SUPP	43	68	66	81	75	84
Cluster residence	Year 11	SUPP	SUPP	SUPP	SUPP	SUPP	SUPP	151	143	131	94	94	92
	Year 12	SUPP	SUPP	SUPP	SUPP	SUPP	SUPP	112	102	77	97	100	97
	Year 13	SUPP	SUPP	SUPP	SUPP	SUPP	SUPP	63	79	70	84	76	80
Leeds all	Year 11	646	393	357	8	5	5	6703	7194	6564	80	87	87
	Year 12	132	67	115	3	2	3	3436	3476	3550	90	93	93
	Year 13	121	135	120	5	4	4	2067	2350	2593	78	76	84

Data Source: Integrated Youth Support Service										DP: O
16-18 NEET and EET Nov 2011 to Jan 2012	NEET		EET		Not Known		Other Activity			
	Number	%	Number	%	Number	%	Number	%		
Cluster	SUPP	SUPP	600	98.3	7	1.1	SUPP	SUPP		
Wedge	493	7.5	6006	91.5	66	1.0	16	0.2		
Leeds all	1538	7.0	20170	91.7	343	1.6	58	0.3		

**Please Note:** Leeds totals for 16-18 NEET will not match publicised totals as published totals include a proportion of those whose status has expired